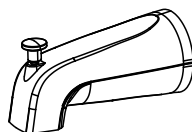
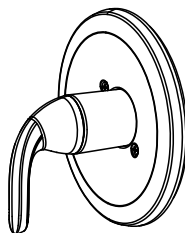
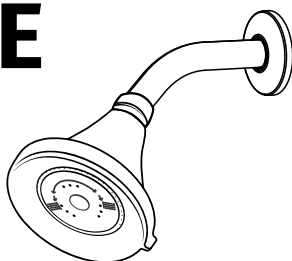




EARTH[®] LUXE TUB & SHOWER FAUCET WITH MIXING VALVE

Model:
N-SLPB-TS15-CH-US
N-SLPB-TS15-BN-US



This diagram is for illustration purposes only.
Your model may vary.

TABLE OF CONTENTS

Pre-Installation 3

Tools Required..... 3

Installation 4

Care and Maintenance 12

Safety Precautions 13

Warranty and Service 14

Ordering Parts or Accessories 15

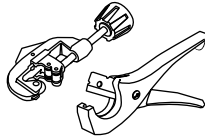
PRE-INSTALLATION

Before you install this product, ensure that all parts are present. Compare parts with the package contents list. If any part is missing or damaged, do not attempt to install the product. Contact customer service for replacement parts.

Tools Required



CPVC Cement



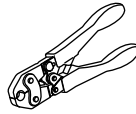
Tube Cutter



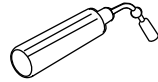
SharkBite Fittings



CPVC Cleaner



Full-Circle Crimping Tool



Torch



Wire Brush

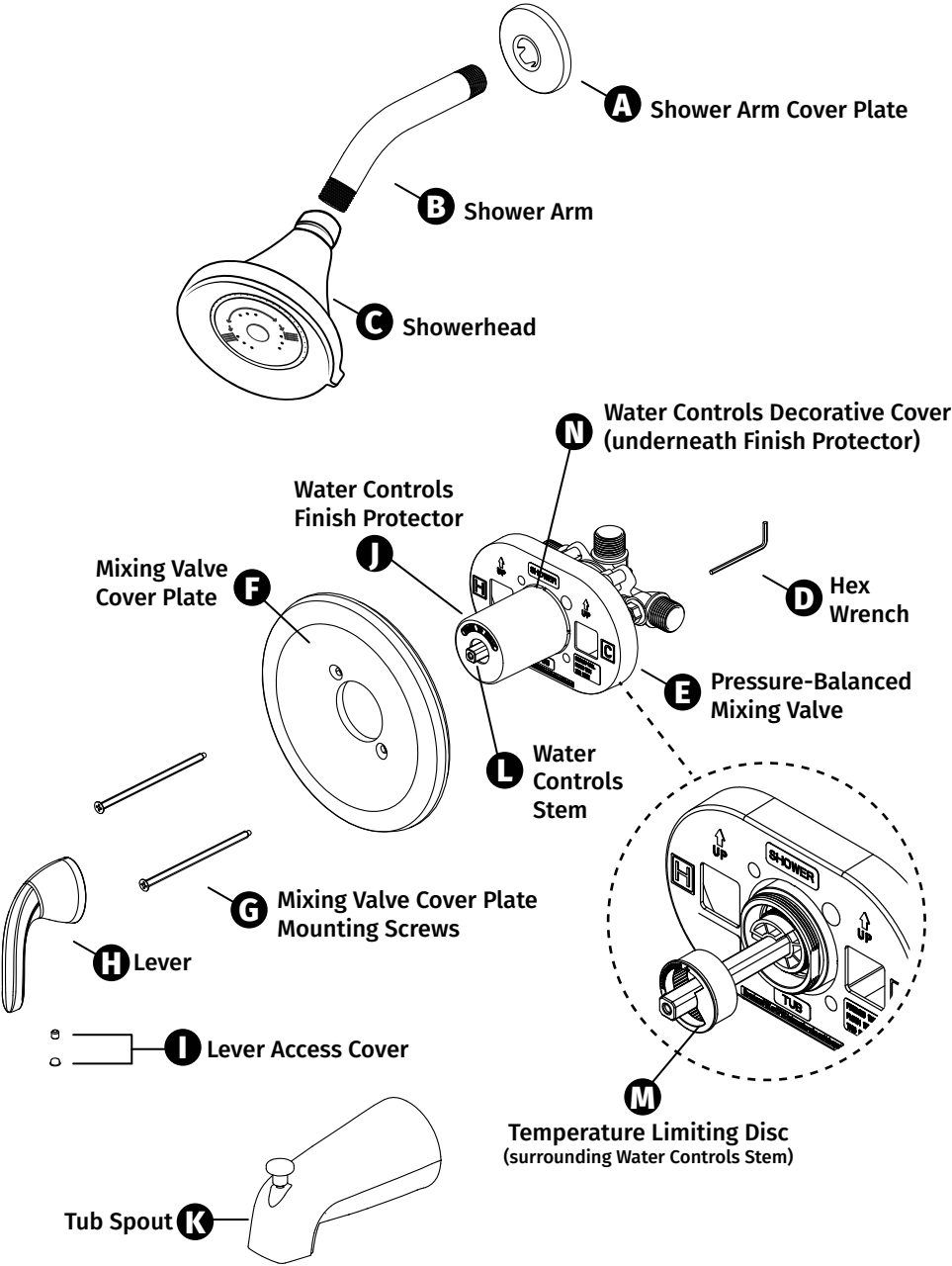


Lead-Free Solder Kit

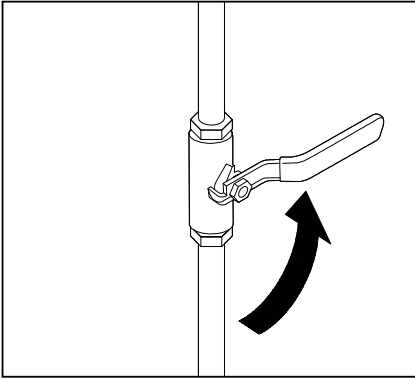


Plumber's Tape

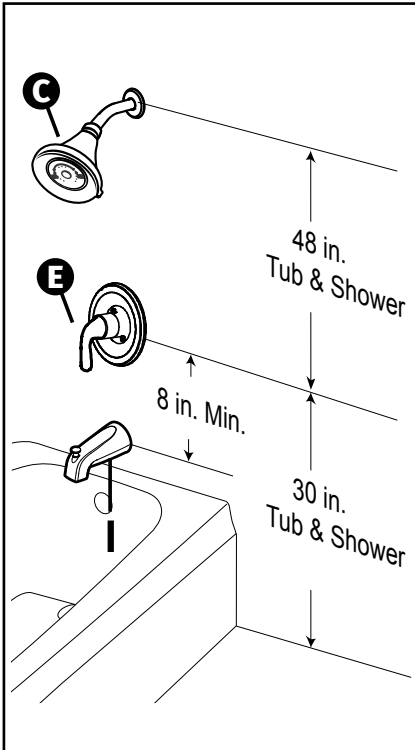
INSTALLATION



INSTALLATION (continued)

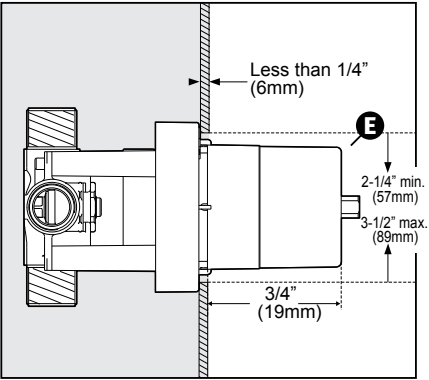


- 1** Turn off shower's water supply.

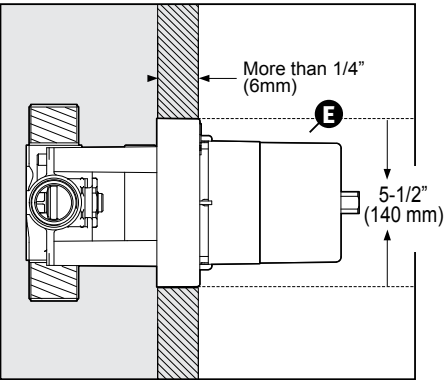


- 2** Recommended placement for the Mixing Valve **E** is 48 inches from the bottom of the shower. Recommended placement for the showerhead **C** is 30 inches from the center of the Mixing Valve.

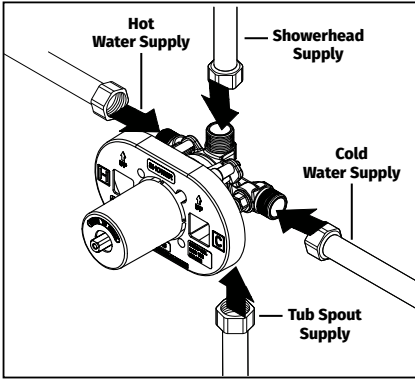
INSTALLATION (continued)



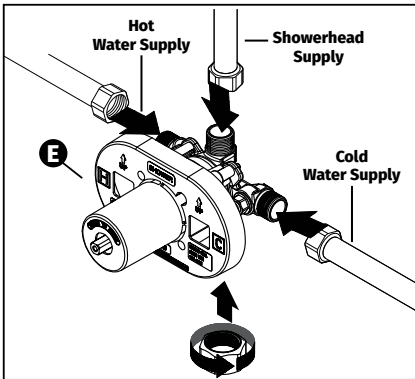
3a Mixing Valve **E** mounting position for walls less than 1/4" thick.



3b Mixing Valve **E** mounting position for walls more than 1/4" thick.

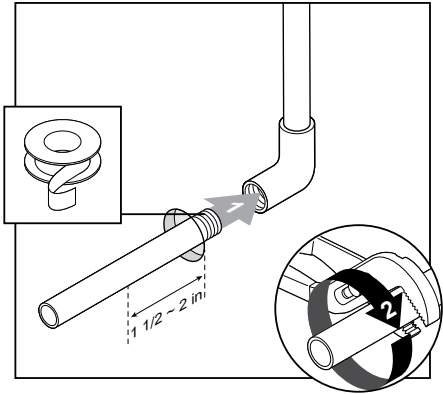


4a Connect plumbing lines to the corresponding locations on the Pressure-Balanced Mixing Valve **E**.

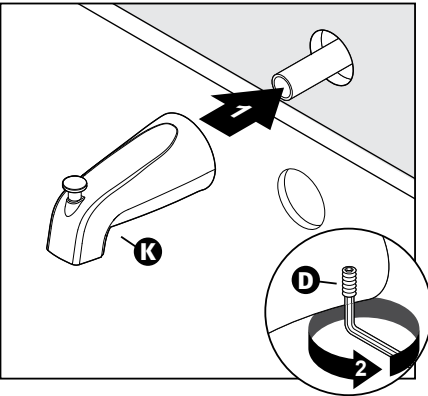


4b If you choose NOT to connect the Tub Spout **K**, be sure to attach the included Tub Spout Plug **M** to the tub spout supply.

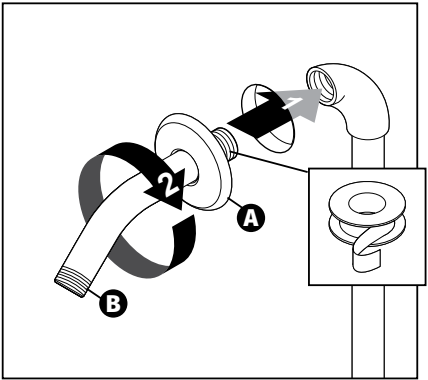
INSTALLATION (continued)



- 5** Wrap Tub Spout stub out threads with plumber's tape to prevent leaks. Insert it into the Tub Spout pipe. It should extend no more than 1.5 – 2" from the wall. Tighten the Tub Spout stub out with a wrench.

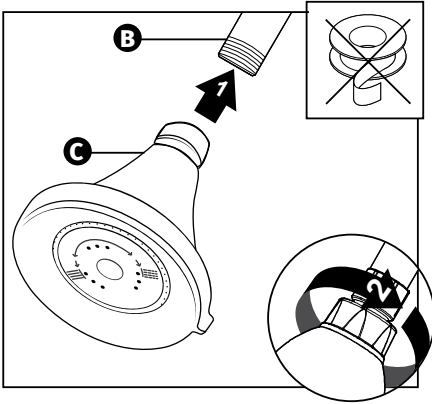


- 6** Slide Tub Spout **K** over stub out. Tighten locking screw with the Hex Wrench **D** to secure Tub Spout.

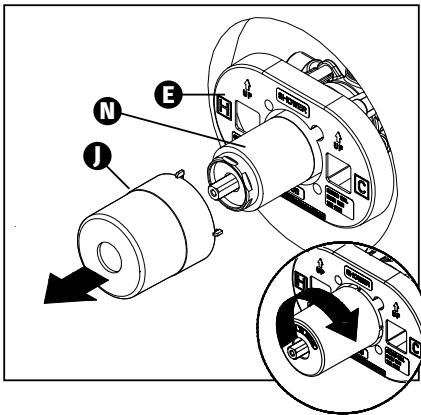


- 7** Wrap plumber's tape around Shower Arm **B** threads. Slide Shower Arm Cover Plate **A** over Shower Arm **B** then connect Shower Arm to water supply line. Rotate it clockwise to tighten. Do not overtighten.

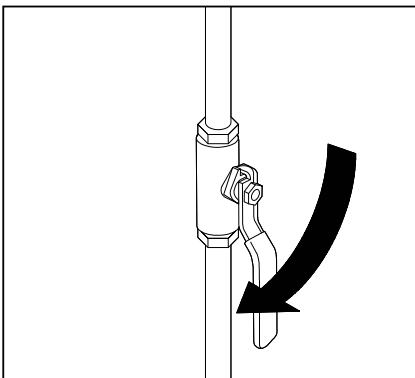
INSTALLATION (continued)



- 8** Turn Showerhead **C** clockwise onto the Shower Arm **B**. Do not use plumber's tape if a rubber washer is in the Showerhead's connection point.

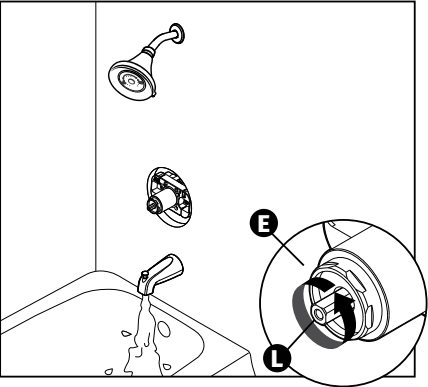


- 9** Rotate the Water Controls Finish Protector **J** clockwise until you hear a snap to remove it from the Mixing Valve **E**. This will reveal the Water Controls Decorative Cover **N**.

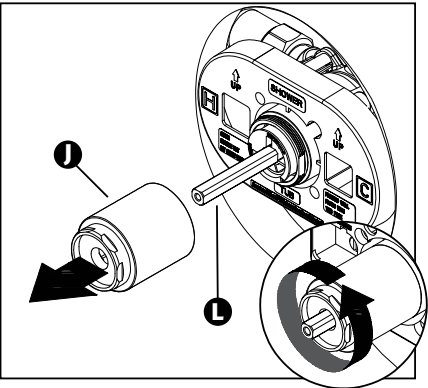


- 10** Turn on the water supply.

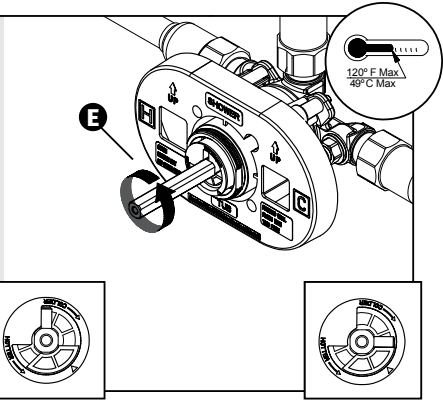
INSTALLATION (continued)



- 11** Turn on the Mixing Valve **E** by rotating Water Controls Stem **L** counterclockwise.

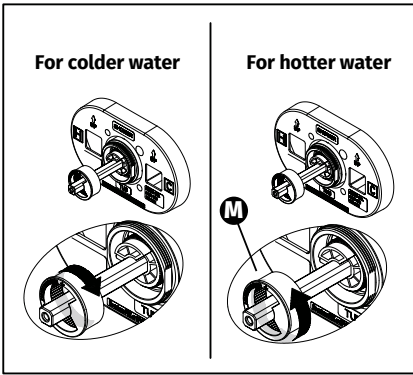


- 12** Remove the Water Controls Finish Protector **J** by rotating it counterclockwise, exposing the Water Controls Stem **L**.



- 13** Adjust the maximum water temperature.
- WARNING:** For safety, the maximum water temperature should be set no hotter than 120°F.

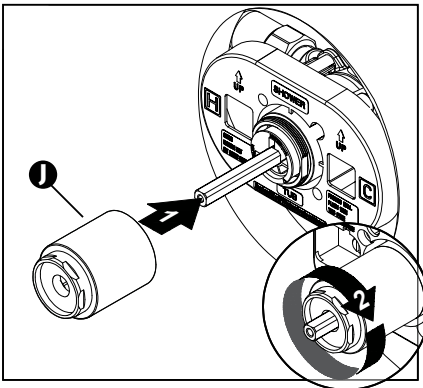
INSTALLATION (continued)



14

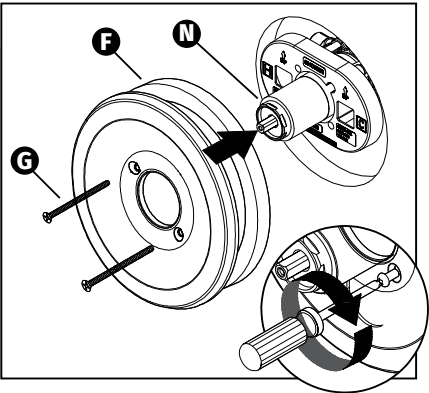
To set the maximum water delivery temperature, remove the red Temperature Limiting Disc **M** from inside the Mixing Valve. It has a tight fit and will require a bit of force to remove. Once removed, the disc can be rotated clockwise and reinserted into the Mixing Valve **E** to reduce the maximum water delivery temperature or rotated counterclockwise and reinserted into the Mixing Valve **E** to increase the maximum water delivery temperature. Repeat as necessary to fine-tune temperature.

WARNING: For safety, the maximum water temperature should be set no hotter than 120° F.

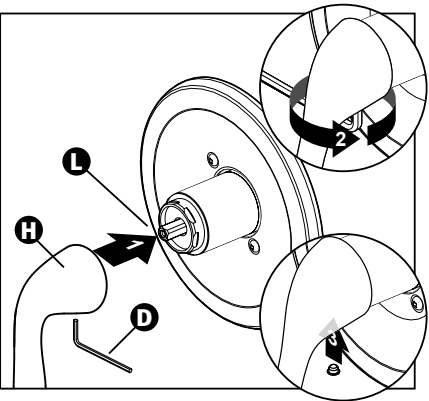


15

Reinstall the Water Controls Finish Protector **1** by rotating it clockwise until tight. Do not overtighten.



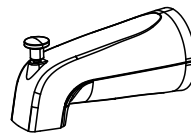
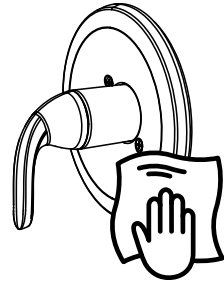
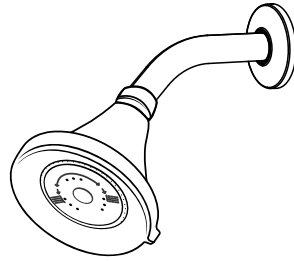
16 Slip the Mixing Valve Cover Plate **F** over the Water Controls Decorative Cover **N**. Tighten it into place using a screw driver and the Mixing Valve Cover Plate Mounting Screws **G**.



17 Place the Lever **H** over the Mixing Valve Water Controls Stem **L**. Hold the Lever in place while using the Hex Wrench **D** to tighten. Do not overtighten. Insert the Lever Access Cover **I**.

CARE AND MAINTENANCE

- If the faucet leaks from the spout, shut off the water supplies and replace the cartridge. Ensure that you install the cartridge correctly for the proper handle rotation.
- To keep your Tub and Shower Faucet with Mixing Valve looking new, wipe down after each use with a soft cotton cloth.
- Protect your faucet from hard water stains and mineral deposits by periodically using an auto spray wax.
- Clean using mild liquid soap and a non-abrasive sponge or cloth. Rinse with clean water.



SAFETY PRECAUTIONS

To avoid injury or accidents, please follow all safety precautions.



WARNING



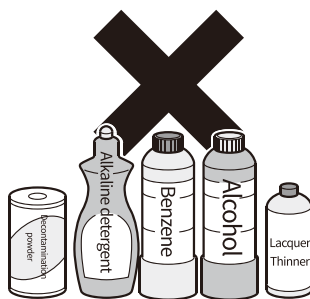
WARNING: For safety, the maximum water temperature should be set no hotter than 120°F.



WARNING: This product can expose you to chemicals including lead, which is known to the State of California to cause cancer. For more information, go to www.P65Warnings.ca.gov



WARNING: Do not use any kind of chemicals or abrasives to clean.



WARRANTY AND SERVICE



AM Conservation warrants that this product is free from defects in material and workmanship for the lifetime of the product from the date of the first purchase or the original distribution of the product under an energy conservation program, subject to the proper installation and/or use of the product. For full standard limited product warranty, please visit amconservation.com/warranties.

If you need information or have any questions, please contact our customer service center at customercare@amconservation.com.

Failure to comply with the assembly, installation, or use instructions will invalidate the applicable product warranty and may cause product malfunction, deficiency, or breakdown, which may result in an injury or property damage.

Neither AM Conservation nor product distributor, supplier, or manufacturer are responsible for any adverse outcome that customer might experience as the result of not following the provided assembly, installation, or use instructions.

ASSORTED INFORMATION

Designed and developed in the USA. Manufactured in China.

Patent www.amconservation.com/patents

ORDERING PARTS OR ACCESSORIES

To order parts or accessories, please contact our customer service center at customercare@amconservation.com.



Certified by
CSA Group

