



LEARN. CONNECT. EXPERIENCE.

[www.aesp.org](http://www.aesp.org)



# Not Quite Retrocommissioning

Eric Wall, CEM, QCxP

01/19/2011

# Not Quite RCx

- Agenda
  - RCx Overview
  - Different Approach
  - Results
  - Moving Forward

# What is Commissioning?

- Ship Building
  - Identify problems (testing & diagnostics)
  - Fix problems
  - Train Crew on O&M



# Facilities Need RCx

- **Complexity**
- Lowest Bid
- Reactive
- Incentives
- Budgets
- Training



# RCx Knowledge

## *Common*

- Avg 16% savings
- < 2 yr payback
- High Attribution
- Training Benefits

## *Uncommon*

- Screening
- Follow Through
- Talent Pool
- Staff Buy In

# Controls – RCx Overachiever

- < 1 yr Paybacks
- Very Common
- Quickly Identified
- Part Load Performance



# Consumers Energy RCx

## *The Puzzle*

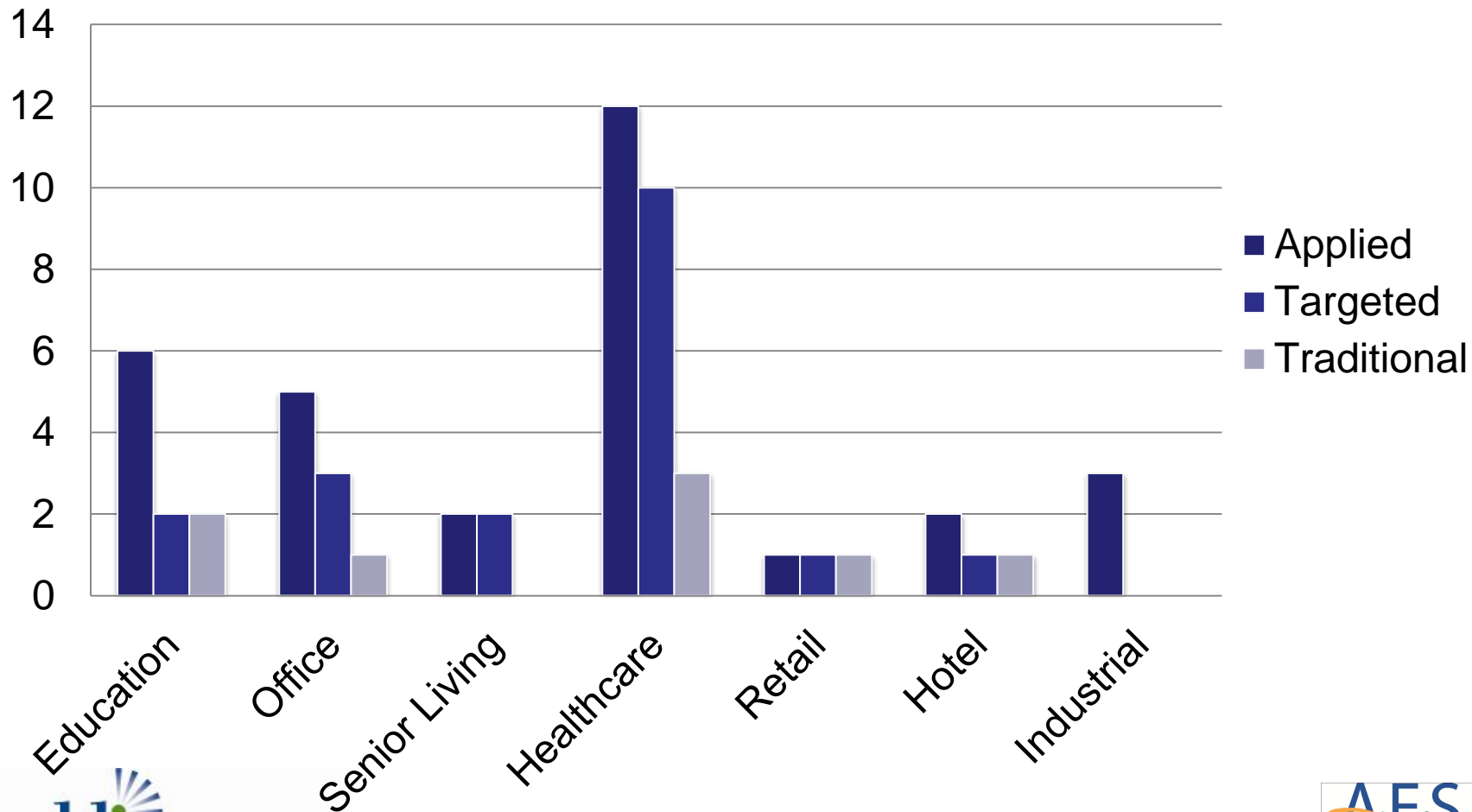
- Mid Year Launch
- First Year Goals

## *Our Solution*

- O&M Targeted Approach
- Systems Commissioning as Needed

# Program Snapshot

## *Participant Selection by Facility Type*



# Results

| <i><b>Targeted</b></i> | <i><b>Traditional</b></i> |
|------------------------|---------------------------|
| 19 Facilities          | 8 (of 19) Facilities      |
| <1 Week Onsite         | Multiple weeks            |
| 1 Month Total          | 8 Months Total            |
| 20% of Cost            | 80% of Cost               |
| 75% of Savings         | 25% of Savings*           |

\*Based on 4 of 8 investigations

# Weighing Trade Offs

## PROS

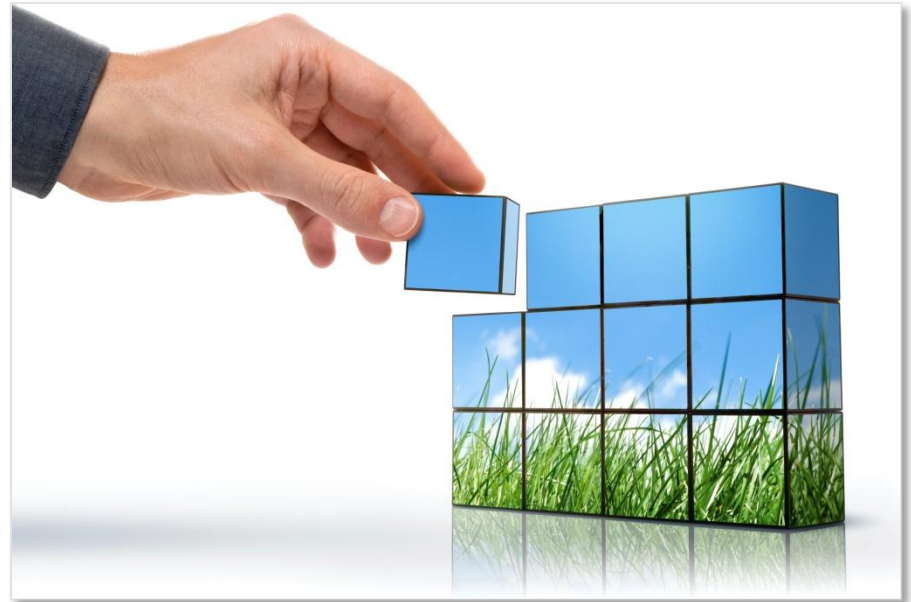
- + Moves Risk to Owner
- + Cost Effective
- + Less Screening
- + Quicker Results

## CONS

- < 100% Potential
- Not RCx
- Market Transformation
- Talent Pool

# Moving Forward

- Targeted as Primary Offering
- Energy Management
- Training
- RCx Available if Warranted



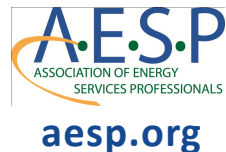
# Thank You!

Eric Wall, CEM, QCxP

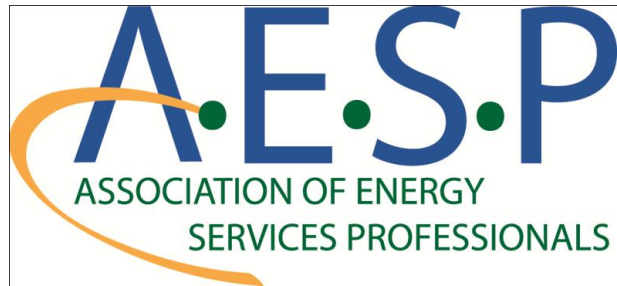
Franklin Energy Services

[ewall@franklinenergy.com](mailto:ewall@franklinenergy.com)

262-240-0672



Save the Date



## 22<sup>nd</sup> National Conference & Expo

February 6-10, 2012  
Hilton San Diego Bay Front

